

47 Series

Adhesive Valve

Reliable and consistent.

vanSCO's 47 Series Adhesive Valves are available in manual over ride primer or snap connector options. These valves operate in a number of positions for increased versatility. Push fittings are conveniently located at all air and fluid inlets. VanSCO® valves ideally offer the gluing industry a range of options for an effortless retrofit into existing system setups.

vanSCO's 47 Series Adhesive Valves feature:

Reliability

Over thirty years of industry proven performance.

Unique Design

A unique diaphragm seal between fluid and air sections means no packing or sliding seals that typically wear out, adjust, or jam.

Sniff-Back, Clean Cut-Off

Unique valve design "sniffs" glue back into the valve head to produce a sharp pattern cut-off.

Durability

Valve plunger is made of long-lasting stainless-steel for maximum durability.

Use With All VanSCO® Heads

Can be used with the wide range of VanSCO® applicator heads.

Double Action

"Air on - air off" actuator ensures positive operation, capable of high cycle rates.

Brass and Stainless-Steel Bodies

Available in brass for general use and stainless-steel for applying adhesives that would otherwise cause adverse brass effects.



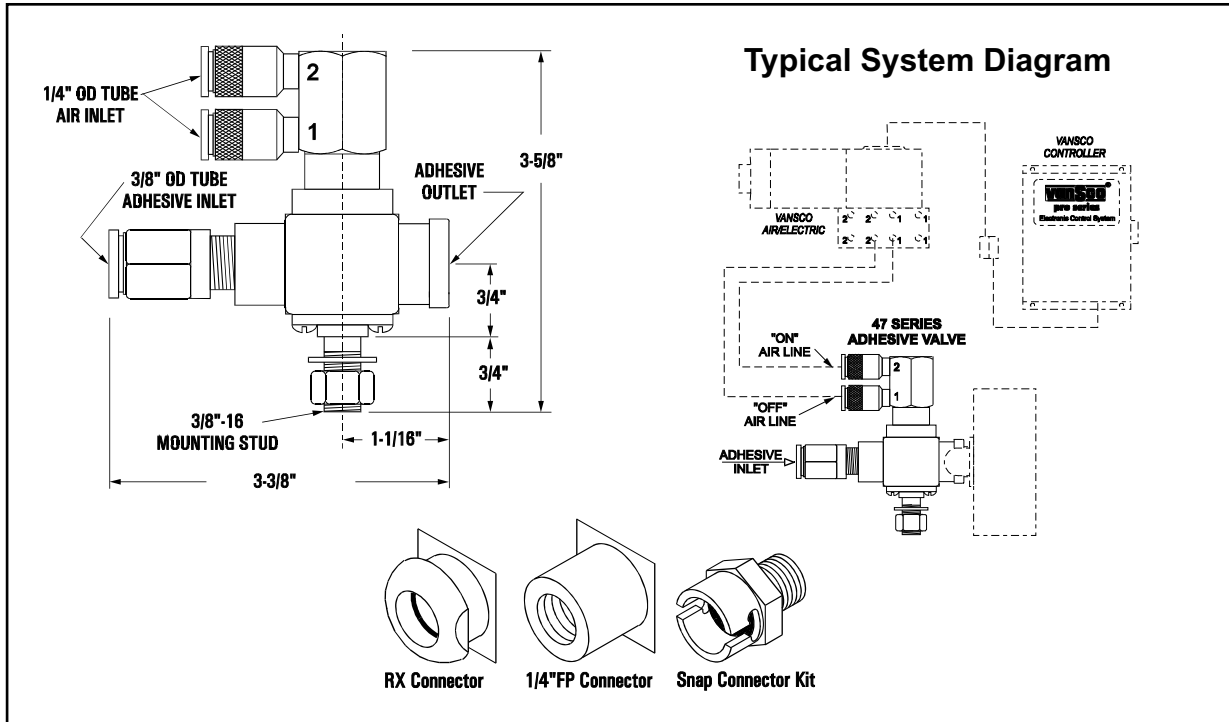
How to order:

Part Number

Part Number	Description
47-01-05	Adhesive valve RX, SV, BR
47-01-06	Adhesive valve 1/4" FP, SV, BR
47-02-05	Adhesive valve RX, HV, BR
47-02-06	Adhesive valve 1/4" FP, HV, BR
47-03-05	Adhesive valve RX, with primer, SV, BR
47-03-06	Adhesive valve 1/4" FP, with primer, SV, BR
47-01-15	Adhesive valve RX, SV, SS
47-01-16	Adhesive valve 1/4" FP, SV, SS
90-02-96	Snap connector kit for 1/4" FP body


SV = standard volume, HV = high volume, BR = brass
SS = stainless-steel, RX = swivel connector

47 Series



Technical Characteristics

47 Series Specifications	
Operating air pressure:	50-125 psi filtered, regulated, and lubricated compressed air
Actuation air consumption:	0.9 cubic inches per actuation at 80 psi operating pressure
Maximum cycle rate:	20 actuations per second at 80 psi operating pressure
Fluid pressure:	1-30 psi
Fluid viscosity range:	1-20,000 centipoise
Construction:	All wetted parts in brass valve assemblies consist of brass, stainless-steel, UHMW polyethylene, and Teflon. Stainless-steel model replaces brass in adhesive section.



For more information visit www.vansco.com or contact us direct.



VanSco Products
2652 Lashbrook Avenue, South El Monte, CA 91733
Tel: 626.448.7611 / Fax: 626.448.0221
sales@vansco.com
www.vansco.com

